

# P80

Rugged Tablets

## Accessories Guide



Ingeniería Electrónica

**STD. Spec.**

### Adapter



PWR-P80-5V2A-CN



PWR-P80-5V2A-EU



PWR-P80-5V2A-UK



PWR-P80-5V2A-US

Adapter(CN/EU/UK/US), I/P: 100-240V, O/P: 5V2A, use with DC-BK-TypeC cable

### USB Cable



**DC-BK-TypeC**  
1.0 meter Type-C cable

### Sim Tray Ejector



**SIM-TRAY-EJECTOR**  
SIM tray ejector

### Hand Strap



**SG-P80-HDSTP**  
Hand Strap

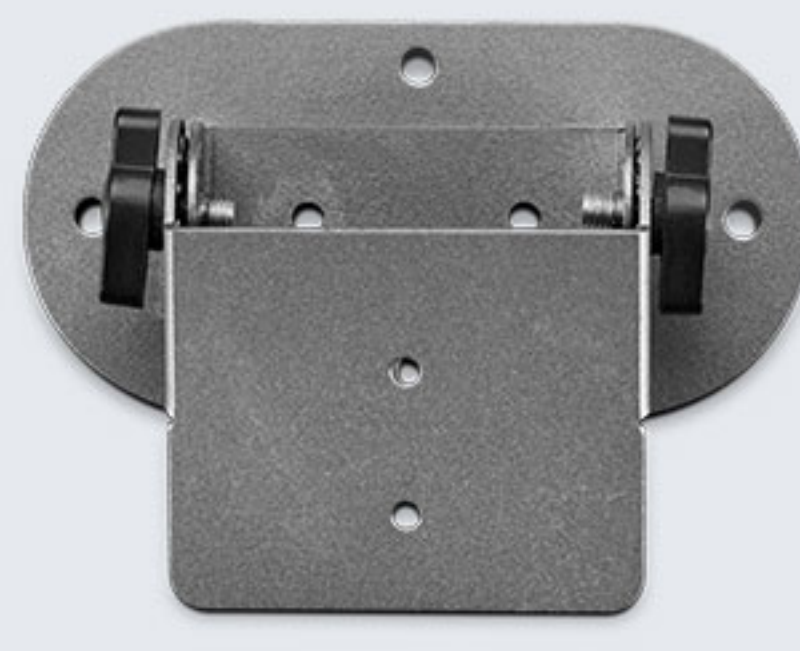
## Optional

### Rugged Rubber Boot



**RB-P80-RR**  
Rugged Rubber Boot, omni-directional protected, can be installed with standard VESA holder with interface- FDMI MIS-C (75x35mm) , and vehicle-mounted bracket MOT-P80 that need to be purchased separately.

### Holder



**MOT-P80**  
Holder, 110\*50\*40\*1.5

### Pistol Grip



**TRG-P80-PG**  
P80 Pistol grip, read UHF tag and barcode scanning like pressing the trigger.

### Charging Cradles & Adapters



**CRD-P80-RBC**  
Charging Cradle for device, use with DCPWR-5V2A-(CN/EU/UK/US) adaptor and TYPE C cable.  
The cradle cup has an insert that is fixed by 4 pcs screws and they must be removed in prior when charging P80 with rugged boot.



**CRD-P80-INS**  
Insert for P80 cradle cup.  
4 pcs M2\*6.0 screws are necessary.



Ingeniería Electrónica

Mayorista autorizado Chainway  
Teléfono: 932 080 258  
email: [info@fqingenieria.com](mailto:info@fqingenieria.com)  
[www.fqingenieria.com](http://www.fqingenieria.com)

