

KYTronic Corp.,Ltd.	PROJECT NAME	DATE	REVISION	PAGE
	KYT DLL TYPE 1	2009-09-16	1.00	1/7

# KYT DLL TYPE 1 Manual

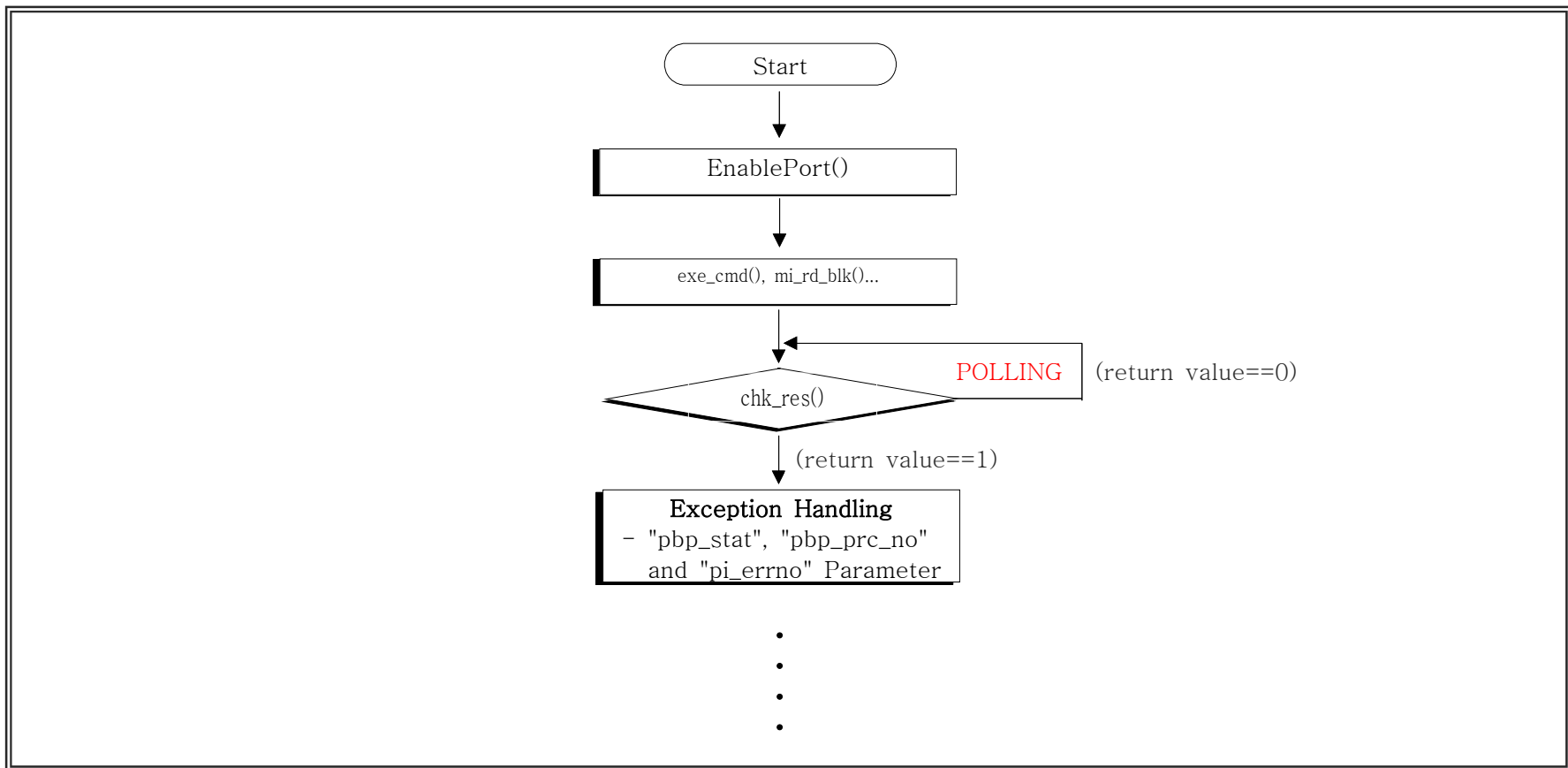
## REVISION HISTORY

CHECK	DATE	DESCRIPTION	REV	PAGE
1	2009.9	First edition.	1.00	
2				
3				
4				
5				
6				
7				
8				
9				
10				
11				
12				
13				
14				
15				
16				
17				
18				
19				
20				

KYTronic Corp.,Ltd.	PROJECT NAME	DATE	REVISION	PAGE
	KYT DLL TYPE 1	2009-09-16	1.00	2/7

\$. "kyt\_type1.dll" Library

- Library for Windows NT4.0/2000/XP.
- Terminal:
- Notice: BYTE==unsigned char, UINT==unsigned int, ULONG==unsigned long, NULL==0x00.
- See this document with the SPEC.



- Flow Chart -

KYTronic Corp.,Ltd.	PROJECT NAME	DATE	REVISION	PAGE
	KYT DLL TYPE 1	2009-09-16	1.00	3/7

@. EnablePort()

- Set the serial port to communicate with the terminal.

\* PROTOTYPE

- BOOL EnablePort(char\* port, BYTE size, BYTE parity, BYTE stopbit, DWORD baudrate, BYTE control)

\* PARAMETERS(Refer to "struct \_DCB" in the MSDN.)

- port : ex) "COM1", "COM2", ...
- size : Number of bits/byte, 4~8.
- parity : 0~4=None,Odd,Even,Mark,Space.
- stopbit : 0,1,2 = 1, 1.5, 2.
- baudrate : Baudrate at which running.
- control : 0,1,2,3 = None, XOn/XOff, RTS/CTS, Both.

\* RETURN

- Normal: 1
- Error : 0

\* REMARKS

- e.g) EnablePort( "COM1", 8, 0, 0, 38400, 0);

=====

@. DisablePort()

- Close the serial port to communicate with the terminal.

\* PROTOTYPE

- BOOL DisablePort()

\* PARAMETERS : void

\* RETURN :

- Normal: 1

KYTronic Corp.,Ltd.	PROJECT NAME	DATE	REVISION	PAGE
	KYT DLL TYPE 1	2009-09-16	1.00	4/7

- Error : 0

=====

@. exe\_cmd()

- Transmit the command at the terminal.

\* PROTOTYPE

- int exe\_cmd(BYTE \*pbp\_cmd, BYTE \*pbp\_dat, UINT piu\_dat\_len);

\* PARAMETERS : Refer to the spec.

- pbp\_cmd: The Pointer of the buffer that 3 Byte instruction(Cm0, Cm1 and Cm2)is filled.

- pbp\_dat: The Pointer of the buffer that Data(Data field in the Command structure) of the command is filled.

- piu\_dat\_len: The length of Data.

\* RETURN

- 0 : Parameter Error

- 1 ~ 255: The Sequence number about that request(It is utilized to confirm whether it is the result about request when you read the result.)

\* REMARKS

- It retry 3 time to the automatic when a communication obstacle happens.

- This function can execute all command that is written on the Spec.

=====

@. chk\_res()

- Check finishing the execution about the request command. And read the result values about the request command.

\* PROTOTYPE

- int chk\_res(BYTE \*pbp\_res, UINT \*piu\_res\_len, BYTE \* pbp\_prc\_no, int \*pi\_errno);

\* PARAMETERS

KYTronic Corp.,Ltd.	PROJECT NAME	DATE	REVISION	PAGE
	KYT DLL TYPE 1	2009-09-16	1.00	5/7

- pbp\_res: The Pointer of the buffer to take the result value of the request command(Refer to "DATA" Field of the SPEC).
- res\_len: The length of pbp\_res
- pbp\_prc\_no: The variable for save the sequence number of the request command to process.
- pi\_errno
  - . Normal: 0
  - . Error : etc(Refer Error Code List.)

\* RETURN

- 0: Don't finish the processing.
- 1: Finish the processing.

\* REMARKS

- If(pi\_errno!=0): You must handle that error
- If(pi\_errno==2000): Negative Response save Negative Code(2Byte) in pbp\_res variable.

=====

@. exe\_stop()

- Stop process about request command.

\* PROTOTYPE

- void exe\_stop()

\* PARAMETERS : void

\* RETURN : void

\* REMARKS

- If you must stop the execution because of the time is delayed.  
Call exe\_stop() function.

=====

@. call\_src\_ver()

Technical Report

KYTronic Corp.,Ltd.	PROJECT NAME	DATE	REVISION	PAGE
	KYT DLL TYPE 1	2009-09-16	1.00	6/7

- Display source version of the dll program into the Message Box.

\* PROTOTYPE

- void call\_src\_ver()

\* PARAMETERS : void

\* RETURN : void

=====

\$. Error Code List

- 1 : No ACK Error
- 2 : TIMEOUT Error
- 3 : NAK Error
- 2000 : Negative Error
- 102 : Compulsion termination Error
- 106 : Packet Frame Error
- 107 : BCC Error
- 108 : Transmission Error

KYTronic Corp.,Ltd.	PROJECT NAME	DATE	REVISION	PAGE
	KYT DLL TYPE 1	2009-09-16	1.00	7/7

\$. Implement the Manager Program.

1.Open and set the serial port by call EnablePort() function in“kyt\_11xx.dll”.

2.Call exe\_cmd(), ms\_rd(),... function according to the deed to do.

The Returned value(pbp\_prc\_no) in an each function is the sequence number about that request command.

It is utilized to confirm whether it is the result about the request when you read the result of the request command.

3. For confirm the result about the request. First you ckeck finishing the execution about the request by chk\_res() function. if that finished the execution. Process the result values.

4.If you must stop the execution because of the time is delayed. Call exe\_stop() function.

5.Call DisablePort() function if you close the serial port.

6. If you changes the setup of the serial port. call EnablePort() function again.

But you must call DisablePort() function for close the existing serial port before call

EnablePort() function.