

| | | | | |
|---------------------|---------------|-----------|----------|------|
| KYTronic Corp.,Ltd. | PROJECT NAME | DATE | REVISION | PAGE |
| | KYT DLL TYPE2 | 2008-08-1 | 1.01 | 1/8 |

KYT DLL TYPE2 Manual

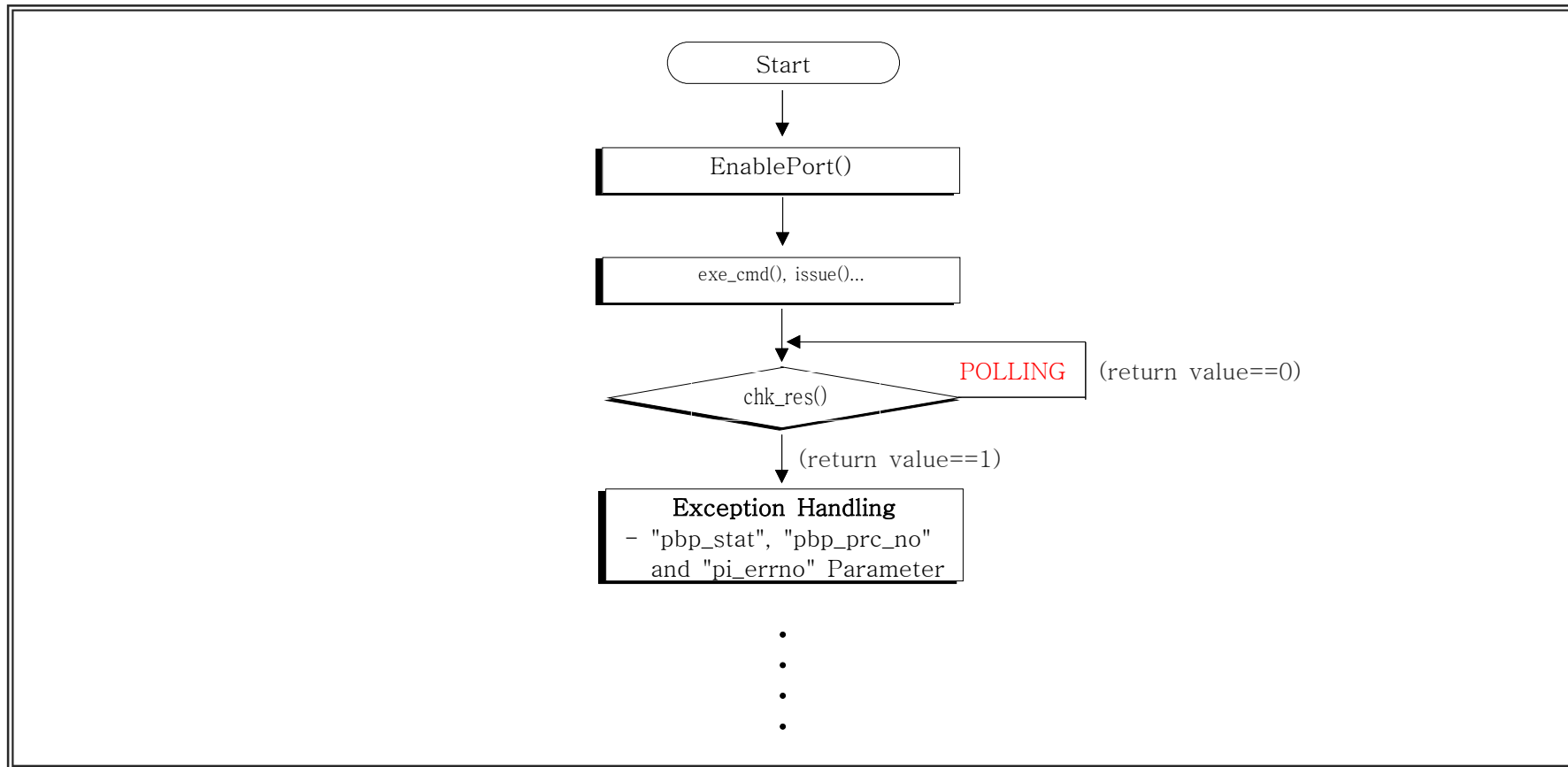
REVISION HISTORY

| CHECK | DATE | DESCRIPTION | REV | PAGE |
|-------|-----------|-----------------------------|------|------|
| 1 | 2008.1.15 | First edition | 1.00 | 8 |
| 2 | 2008.8.1 | KYT 4XXX function is added. | 1.01 | 8 |
| 3 | | | | |
| 4 | | | | |
| 5 | | | | |
| 6 | | | | |
| 7 | | | | |
| 8 | | | | |
| 9 | | | | |
| 10 | | | | |
| 11 | | | | |
| 12 | | | | |
| 13 | | | | |
| 14 | | | | |
| 15 | | | | |
| 16 | | | | |
| 17 | | | | |
| 18 | | | | |
| 19 | | | | |
| 20 | | | | |

| | | | | |
|---------------------|---------------|-----------|----------|------|
| KYTronic Corp.,Ltd. | PROJECT NAME | DATE | REVISION | PAGE |
| | KYT DLL TYPE2 | 2008-08-1 | 1.01 | 2/8 |

\$. "kyl_type2.dll" Library

- Library for Windows NT4.0/2000/XP.
- Notice: BYTE==unsigned char, UINT==unsigned int.



- Flow Chart -

| | | | | |
|---------------------|---------------|-----------|----------|------|
| KYTronic Corp.,Ltd. | PROJECT NAME | DATE | REVISION | PAGE |
| | KYT DLL TYPE2 | 2008-08-1 | 1.01 | 3/8 |

=====

@. EnablePort()

- Set the serial port to communicate with the terminal.

* PROTOTYPE

- BOOL EnablePort(char* port, BYTE size, BYTE parity, BYTE stopbit, DWORD baudrate, BYTE control)

* PARAMETERS(Refer to "struct _DCB" in the MSDN.)

- port : ex) "COM1", "COM2", ...
- size : Number of bits/byte, 4~8.
- parity : 0~4=None,Odd,Even,Mark,Space.
- stopbit : 0,1,2 = 1, 1.5, 2.
- baudrate : Baudrate at which running.
- control : 0,1,2,3 = None, XOn/XOff, RTS/CTS, Both.

* RETURN

- Normal: 1
- Error : 0

* DETAIL

- e.g) EnablePort("COM1", 8, 0, 0, 9600, 0);
- =====

@. DisablePort()

- Close the serial port to communicate with the terminal.

* PROTOTYPE

| | | | | |
|---------------------|---------------|-----------|----------|------|
| KYTronic Corp.,Ltd. | PROJECT NAME | DATE | REVISION | PAGE |
| | KYT DLL TYPE2 | 2008-08-1 | 1.01 | 4/8 |

- BOOL DisablePort()

* PARAMETERS : void

* RETURN :

- Normal: 1

- Error : 0

=====

@. exe_cmd()

- Transmit the command at the terminal.

* PROTOTYPE

- int exe_cmd(BYTE pb_cmd);

* PARAMETERS : Refer to the spec.

- pb_cmd

- . pb_cmd==0x30: Error Clear.
- . pb_cmd==0x31: Status Request
- . pb_cmd==0x40: Stacker #1 Out
- . pb_cmd==0x41: Stacker #2 Out
- . pb_cmd==0x42: Auto Issue
- . pb_cmd==0x43: Capture
- . pb_cmd==0x44: Feed In
- . pb_cmd==0x45: Feed Out
- . pb_cmd==0x46: Stop
- . pb_cmd==0x47: Stack1 Wait
- . pb_cmd==0x48: Stack2 Wait
- . pb_cmd==0x49: Auto Wait

| | | | | |
|---------------------|---------------|-----------|----------|------|
| KYTronic Corp.,Ltd. | PROJECT NAME | DATE | REVISION | PAGE |
| | KYT DLL TYPE2 | 2008-08-1 | 1.01 | 5/8 |

- . pb_cmd==0x4a: Feed Out Sol
- . pb_cmd==0x50: Set the Baud rate to 9600 BPS.
- . pb_cmd==0x51: Set the Baud rate to 19200 BPS.
- . pb_cmd==0x60: Version.

* RETURN

- 0 : Parameter Error.
- 1 ~ 255: The Sequence number about that request(It is utilized to confirm whether it is the result about request when you read the result.)

* DETAIL

- It retry 3 time to the automatic when a communication obstacle happens.
- This function can execute all command that is written on the Spec.

=====

@. chk_res()

- Check finishing the execution about the request command. And read the result values about the request command.

* PROTOTYPE

- int chk_res(unsigned char *pbp_stat, unsigned char * pbp_prc_no, int *pi_errno);

* PARAMETERS

- pbp_stat: The Pointer of the buffer to take the status value(10 BYTE) of the terminal.
 - . if the command is "0x60"(Indicate Firmware Version) : Firmware Version
 - . other command : status value of the terminal.(Refer to the spec)
- pbp_prc_no: The variable for save the sequence number of the request command to process.(1 byte)
- pi_errno
 - . Normal: 0

| | | | | |
|---------------------|---------------|-----------|----------|------|
| KYTronic Corp.,Ltd. | PROJECT NAME | DATE | REVISION | PAGE |
| | KYT DLL TYPE2 | 2008-08-1 | 1.01 | 6/8 |

. Error : etc(Refer to the Error Code List.)

* RETURN

- 0: Execution is not finished.
- 1: Execution is finished.

=====

@. exe_stop()

- Stop process about request command.

* PROTOTYPE

- void exe_stop()

* PARAMETERS : void

* RETURN : void

* DETAIL

- If you must stop the execution because of the time is delayed.
Call exe_stop() function.

=====

@. call_src_ver()

- Display source version of the dll program into the Message Box.

* PROTOTYPE

- void call_src_ver()

* PARAMETERS : void

* RETURN : void

=====

| | | | | |
|---------------------|---------------|-----------|----------|------|
| KYTronic Corp.,Ltd. | PROJECT NAME | DATE | REVISION | PAGE |
| | KYT DLL TYPE2 | 2008-08-1 | 1.01 | 7/8 |

@. clr()

- Error Clear.

* PROTOTYPE

- int clr();

* PARAMETERS : void

* RETURN

- 0 : Parameter Error.
- 1 ~ 255: The Sequence number about that request(It is utilized to confirm whether it is the result about request when you read the result.)

=====

@. rqt()

- Status Request.

* PROTOTYPE

- int rqt();

* PARAMETERS : void

* RETURN

- 0 : Parameter Error.
- 1 ~ 255: The Sequence number about that request(It is utilized to confirm whether it is the result about request when you read the result.)

=====

| | | | | |
|---------------------|---------------|-----------|----------|------|
| KYTronic Corp.,Ltd. | PROJECT NAME | DATE | REVISION | PAGE |
| | KYT DLL TYPE2 | 2008-08-1 | 1.01 | 8/8 |

%. Notice(Refer to the spec)

- All command send "Status Request Command" to the automatic for "busy flag" inspection.(set_baudrate() Function excludes.)

\$. Error Code List

1 : No ACK Error
2 : TIMEOUT Error
3 : NAK Error
2000 : Negative Error
102 : Compulsion termination Error
106 : Packet Frame Error
107 : BCC Error

\$. Implement the Manager Program.

1.Open and set the serial port by call EnablePort() function in“kyt_type2.dll”.

2.Call rqt(), exe_cmd(),... function according to the deed to do.

The Returned value(pbp_prc_no) in an each function(exe_cmd, issue ..) is the sequence number about that request command.

It is utilized to confirm whether it is the result about the request when you read the

| | | | | |
|---------------------|---------------|-----------|----------|------|
| KYTronic Corp.,Ltd. | PROJECT NAME | DATE | REVISION | PAGE |
| | KYT DLL TYPE2 | 2008-08-1 | 1.01 | 9/8 |

result of the request command.

3. For confirm the result about the request. First you ckeck finishing the execution

about the request by chk_res() function. if that finished the execution. Process the result values.

4.If you must stop the execution because of the time is delayed. Call exe_stop() function.

5.Call DisablePort() function if you close the serial port.

6. If you changes the setup of the serial port. call EnablePort() function again.

But you must call DisablePort() function for close the existing serial port before call

EnablePort() function.